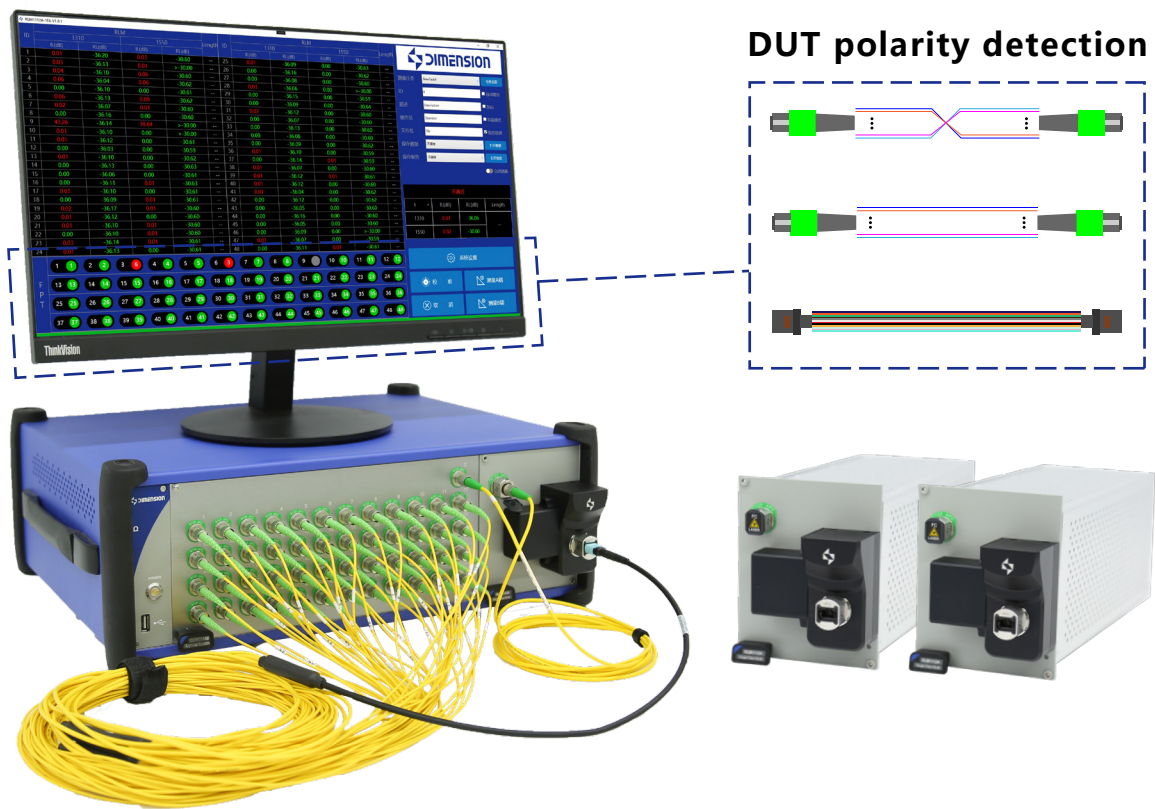


Multi-channel polarity IRL



The current insertion and return loss meters on the market can only test the insertion loss and return loss, the polarity measurement can not be synchronously resulted for multiple optical fibers.

Dimension Technology's polarity insertion return loss tester has completed the three-in-one automatic test of multi-core optical fiber IL, RL, and polarity through innovative design and technology. The device has not only be able to measure the polarity of the simplex fiber, but also has a polarity learning function, which greatly improves production efficiency, reduces equipment investment costs, and guarantees IL under the premise of improving efficiency. Reliability and accuracy of RL measurements.

Main Features

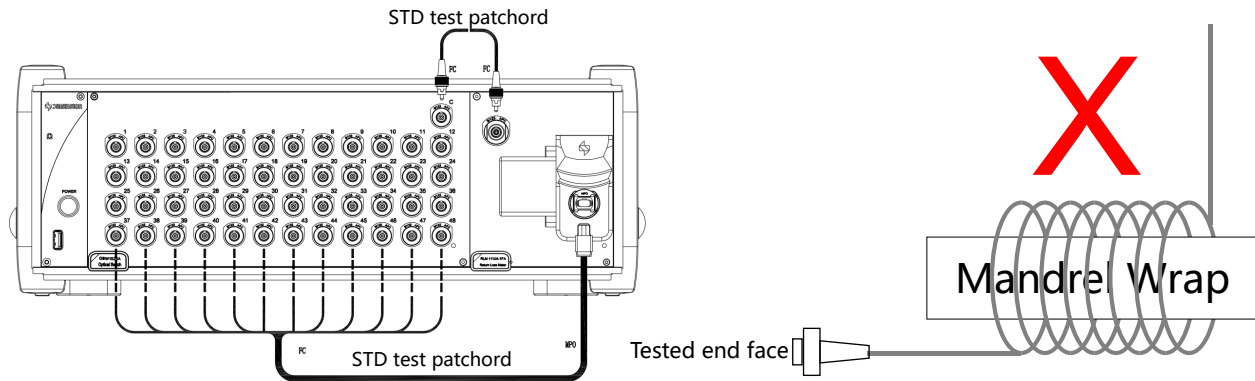
- RL mandrel-free, IL, RL and polarity detection, single channel test time as low as 1.5S
- Support various optical devices to test fiber polarity
- Three-in-one automatic test of mpo fiber IL, RL and polarity
- Save work stations and increase production and test efficiency by more than 6 times
- Abundant and interchangeable, high-reliability detector adapter connectors
- Support PC segment control software, automatically save test data reports, and support remote network control

Applications

- Jumper, connector performance testing
- Performance testing of optical passive components
- Construction of automatic jumper production line

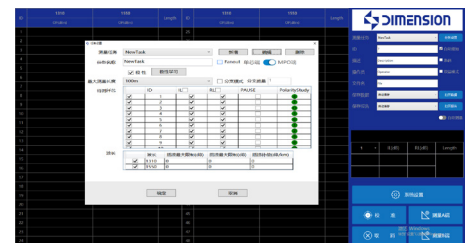
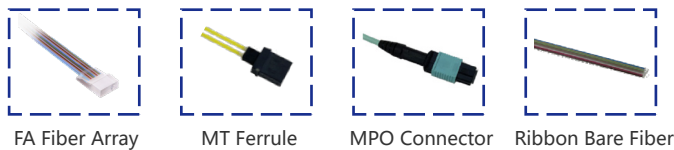
◀ RL mandrel-free test, IL, RL and polarity detection, single channel test time as low as 1.5S

Based on the principle of optical time domain detection, the mandrel-free test of return loss is realized. Using high-speed sampling design and software optimization algorithm, low IL, RL and polarity detection single channel to 1.5S (fast mode)



◀ Support various optical devices to test fiber polarity

Based on the years of the experience accumulation researching on optical lenses. it has realized a large photosensitive area, and the polarity learning of optical devices within the area can be easily customized and completed.



Polarity Learning Setup

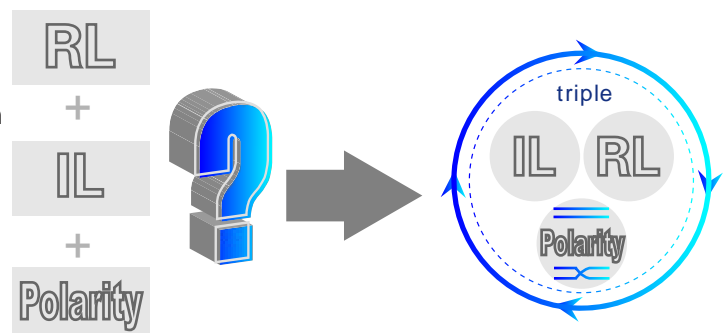


IL, RL and polarity 3-in-1 test

◀ Multi-core fiber IL, RL and polarity three-in-one automatic test

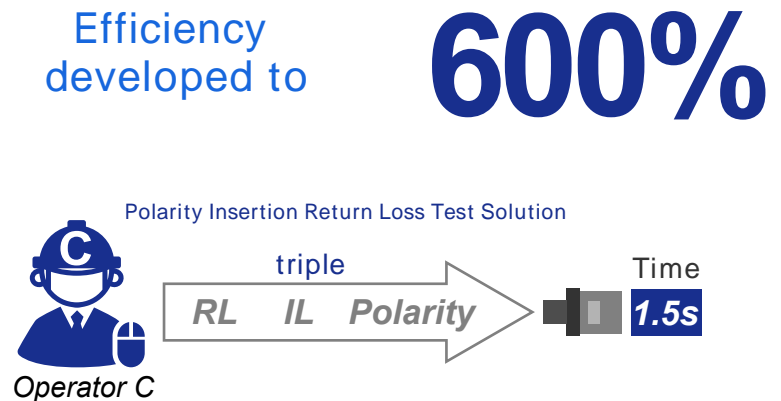
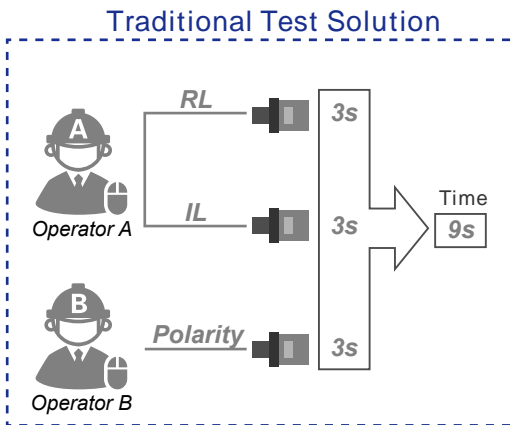
Multi-channel polarity insertion return loss tester can quickly realize mandrel-free multi-core optical fiber. Patch cord return loss test and insertion loss test, at the same time can realize multi-core optical fiber.

Polarity detection, truly realizing the three-in-one automatic test of loss and polarity.



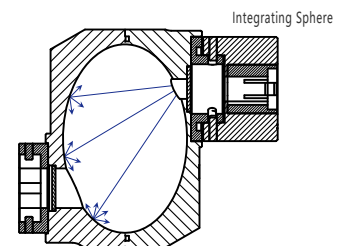
Save work stations, increase production and test efficiency by more than 6 times

The multi-channel polarity return loss tester can automatically test IL, RL, and Polarity at the same time, reducing the need for employees to plug and unplug the measurement jumper and equipment multiple times between testing IL/RL and polarity. Single-channel IL, RL, Polarity simultaneously test time as low as 1.5S (fast mode). The test efficiency is increased by more than 600%, and the cost of customer equipment investment can also be reduced.



Abundant and interchangeable, high-reliability connectors

In order to meet the different needs of customers, a series of rich and interchangeable detectors with high reliability have been developed. Adapter connector, easy to use, one-time test loss and polarity, no need to plug and unplug again.



Humanized software design

With a simple and clear software UI design, users can customize the test report, which can automatically save and upload test data and reports.



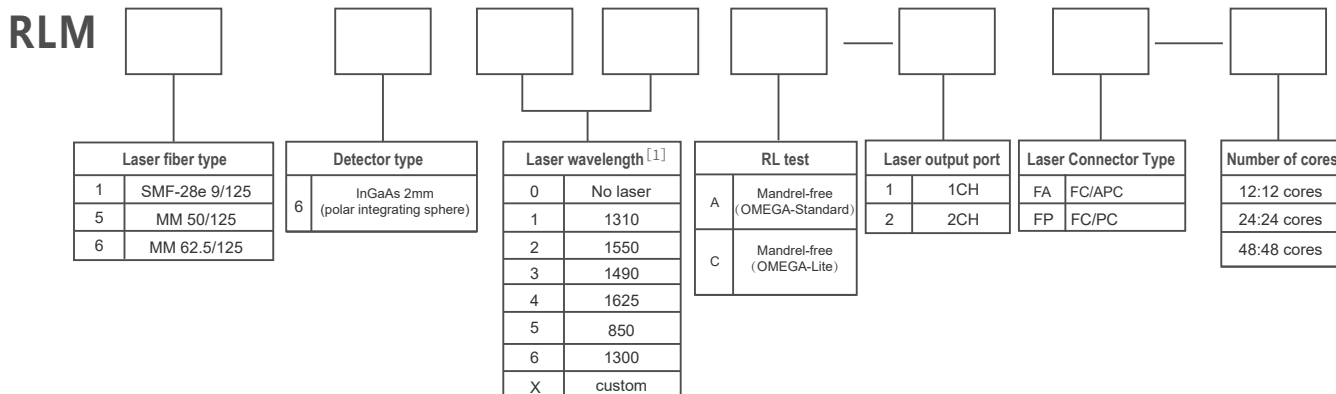
Main Specifications

	Basic product model	RLM1612A-1FA-24	RLM5656A-1FP-24
Light source	Fiber type	SM 9/125	MM 50/125 or 62.5/125
	Wavelength	1310/1550nm	850/1300nm
	Source Type	Laser	Laser
	Encircled Flux Standard	NA	IEC-61280-4-1
IL section	IL Accuracy*	0~1dB:±0.02dB 1~5dB:±0.1dB 5~10dB:±0.5dB	0~1dB:±0.02dB 1~5dB:±0.1dB
	IL Stability*	±0.02dB (<0.5H) ±0.03dB (<8H)	
	IL Repeatability*	±0.02dB	
RL section	RL Range	-30~-80dB	-15~-60dB
	RL Accuracy	-30~-70dB : ±1.0dB -70~-75dB : ±2.0dB	-15~-50dB : ±1.0dB -50~-55dB : ±2.0dB
Others	Fiber length (Min)	DUT reflections (both ends)>50dB : 0.6m DUT reflections (both ends)<50dB : 1.5m	
	Testing Time	<18s (Fast Mode: SM MPO12<18S;MM MPO12<18S)	
	Display resolution	0.01dB	
Mainbody	Input power	AC90~260V/50HZ	
	Warming up time	30 minutes (if the storage temperature is different from the service temperature, the preheating time is 60 minutes)	
	Recalibration period	2years	
	Working temperature	10℃~40℃	
	Storage temperature	-40℃~70℃	
	Size	ALPHA platform: 359mm×274mm×115mm,OMEGA platform: 462mm×374mm×171mm, Module: 285mmX133mmX71mm	

*All specifications given at temperature 23°C±1°C,after a 30-minute warm-up,with FC/PC connector.

*Added variable caused by optical switch would be ±0.03dB if using MPO/MTP.

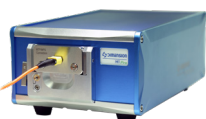
Ordering Information



Example:
RLM1612A-1FA-24 24-core Mandrel-free polarized IRL test module,1310/1550 ,SM 9/125 InGaAs 2mm(Polar integrating sphere), Laser output 1CH FC/APC

Note: RL test model A/C supports dual laser wavelength. Two-digit code represents two laser wavelengths. Customers can choose laser wavelength or customized laser wavelength in the list.Model A/C supports four single-mode wavelengths, and XX should be selected for the two-digit coding.

Related Products



MT Pro



Smartcheck



Offsoon Pro

Dimension Technology Co.,Ltd

Tel: +86 755-26480850

Email: sales@dimension-tech.com

Web: www.dimension-tech.com